

# GeoPoint

AUTOMATED  
IMAGE GEOLOCATION



GeoPoint is commercially available and NIPR-accessible service that provides rapid, automated image/video geolocation and reporting. GeoPoint fuses information from geospatial databases, PAI/CAI and other sources using specialized AI/ML to geolocate images taken from cellphones, surveillance cameras and low-flying UAV's. AV's ground-breaking technologies for multi-modal and multi-view AI accelerate analytical workflows and provide critical geospatial insights which otherwise be impossible using conventional methods.

## \_Product Statistics

[FEATURE]	[STATISTIC]
PROCESSING TIME	3-5 minutes per image
REFERENCE DATA SIZE	Global Coverage: > 250M+ images > 9B map nodes
ACCURACY	Up to 80% within 500 meters (varies by query)
ACCESS	Commercial Internet, NIPRNet
OUTPUT FORMATS	KML, GeoJSON, CSV, Excel, PDF, .docx

## \_Reference and Foundation Data

[REFERENCE DATA AND COVERAGE]	
OVERHEAD IMAGE COVERAGE	Global in Latitudes [+70 deg, - 70 deg.]
MAP DATA	Global, 9B nodes
[GROUND IMAGE REFERENCE COVERAGE]	
URBAN	> 1000 / km2
SUBURBAN	50-100 / km2
RURAL/REMOTE	~ 10-20 / km2

## \_Performance

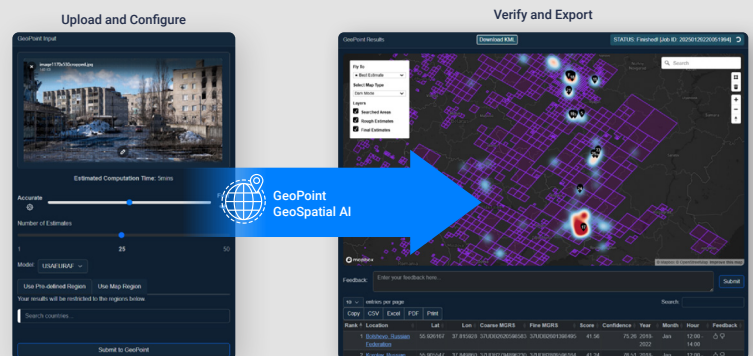
COARSE AREA PREDICTION TIME	15 sec
REFINED PREDICTION TIME	2-3 minutes
AVERAGE TOTAL TIME PER QUERY	~3 minutes
CORRECT COUNTRY LOCALIZATION	> 98%
CORRECT REGION LOCALIZATION	> 85%
CORRECT CITY LOCALIZATION	> 70%
CORRECT STREET-LEVEL LOCALIZATION	> 50%

## \_Customized Geospatial Reporting

- > Fuses data from multiple PAI/CAI sources including social media and news outlets
- > Provides insight into geopolitical events, emerging threats and key actors in identified locations
- > Identifies co-located images with similar features and people matching the queried images
- > Templated reporting customized for each organization's unique format and mission

## \_Operational Benefits

- > Accelerates time to locate imagery from days to minutes
- > Rapidly identifies non-locatable photos with confidence assessment to save analysts' time
- > Situational and contextual reporting offer rapid and explainable verification
- > Integrates with AV's proven PAI analysis platform to provide enhanced geospatial awareness
- > Accessible on multiple networks, or on-prem deployment for secured applications



## \_Deployment

LICENSE TYPES	Per-Seat, Enterprise, Government Use
WEB-ACCESS	Commercial Internet NIPR
ON-PREM	Available for High-Volume Processing and Secure Data
READINESS LEVEL	TRL 9
CURRENT CUSTOMERS	NGA, SOCOM, CENTCOM, ACC ISR, MCIOC, MCIA, MIG I & III, Army ISR Task Force
KEY PARTNERS	NGA, Army ISR Task Force, 66th Military Intelligence Brigade, USAREUR-AF G2