

# Titan™ MS

MULTI-SENSOR



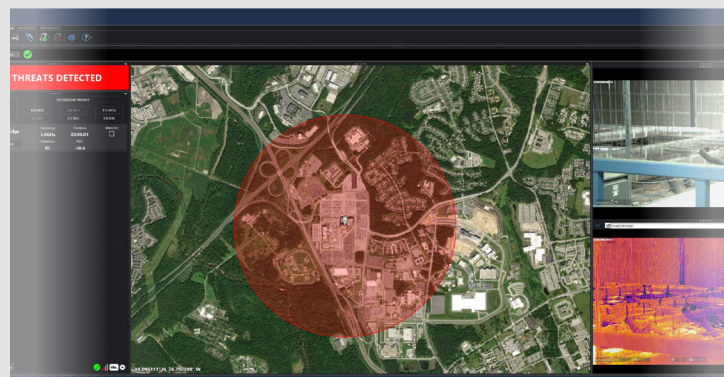
Used for fixed site protection, Titan™ MS is an AI-powered multi-sensor fusion solution that detects, identifies, tracks, defeats, and reports on unmanned system threats. Titan MS is a multi-mission, multi-threat solution suitable for air, sea, and land threats. It fuses AI and ML algorithms from industry-leading sensors to address RF-controlled and autonomous drone threats.

# Multi-sensor Fixed Site Protection

TITAN

## \_Specifications

<b>SF UNIT COVERAGE</b>	2.4 GHz / 5.8 GHz / Wi-Fi
<b>EF UNIT COVERAGE</b>	433 / 868 / 915 MHz, 1.2 GHz & GNSS Bands E1/L1, E5/L5, L2, E6
<b>DETECTION RANGE</b>	3 km radius, horizontal (RF Sensor)
<b>DEFEAT RANGE</b>	2 km radius, horizontal (RF Sensor)
<b>RF POWER OUTPUT</b>	433/868/915 MHz & 1.2 GHz: 60W, 2.4/5.8 GHz: 75W
<b>TEMPERATURE RANGE</b>	-20°C to 50°C
<b>INGRESS PROTECTION</b>	IP66 and IEC 60529
<b>SALT/FOG, VIBE, SHOCK, EMI</b>	MIL-STD-810 method 509.6, 810G method 514.7C-1, MIL-STD-461G CE102
<b>PHYSICAL</b>	~7,700 lbs (including all sensors and 16ft telescopic mast/platform)
<b>CONNECTIVITY</b>	RJ45 Ethernet
<b>POWER</b>	240VAC / 20A
<b>SECURITY</b>	eMASS Listed, DIACAP Accreditation (Titan Portion)
<b>SAFETY</b>	MIL-STD-882E compliant; HERP: 2 feet, HERO: 10 ft
<b>OPERATOR DISPLAY</b>	38" configurable workstation (with operator control, reporting, activity log)
<b>C2 INTEGRATION</b>	Full API for external system integration
<b>WARRANTY</b>	2 Years; includes training and software updates (Titan Portion)
<b>SENSORS</b>	RF: Simultaneous Vertical & Horizontal Polarization, 300MHz - 6GHz RADAR: X-Band w/ fixed, alternating, and continuous scan modes Electrical-Optical (EO)/Infrared (IR): Ultraviolet 0.25 through Visible-Infrared



## \_Key Features

- › **360° SITUATIONAL AWARENESS** - Used for fixed site protection, Titan MS delivers a superior command and control interface that provides security from all angles of the protected area
- › **FULL-TIME PROTECTION, LOW LIFETIME COST** - Titan MS classifies and mitigates multiple threats across five RF bands, radar, and optics, under virtually any environmental conditions, requiring minimal maintenance and zero calibration for a low total cost of ownership.
- › **INTEGRATION & CROSS-DOMAIN CAPABILITY** - Titan MS readily integrates with other C2 platforms, supporting secure bidirectional data leveraging our API/ICD.

