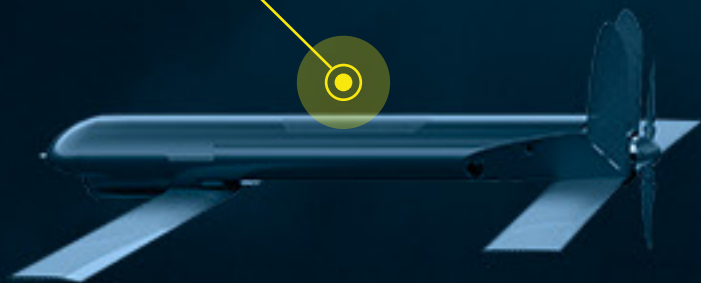


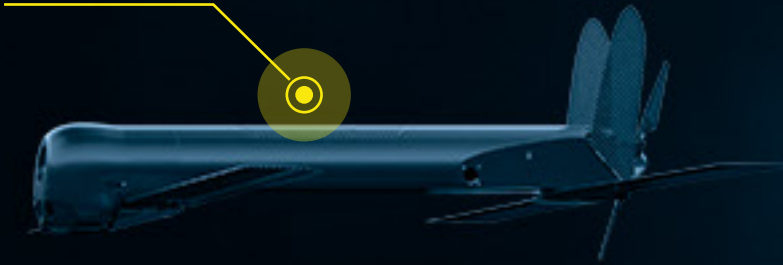
SWITCHBLADE® 300



SWITCHBLADE® 600



BLACKWING™



AEROVIRONMENT
TACTICAL MISSILE SYSTEMS
WHEN PRECISION COUNTS

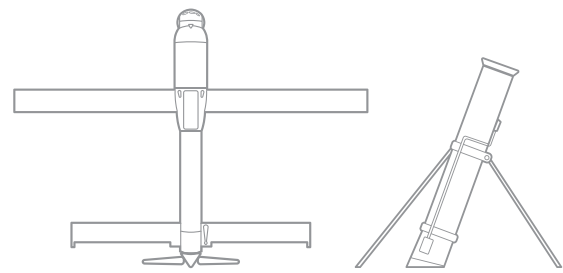


AeroVironment's tactical missile systems close the gap between observation and action, giving troops the ability to identify threats and deliver a precision lethal payload with minimal collateral damage. Their small size and low acoustic, visual and thermal signature make them difficult to detect, recognize or track, even at close range.

Rapidly deployable, highly maneuverable, with high performance optics and scalable munition payloads, AeroVironment's Switchblade loitering missile systems enable the warfighter to easily launch, fly, track and engage beyond line-of-sight targets and light armored vehicles across land, maritime, and air-launched scenarios.

When every second counts, AeroVironment's tactical missile systems deliver the actionable intelligence and precision firepower needed to achieve mission success across multiple domains.

SWITCHBLADE® 600 LOITERING MISSILE



DIMENSIONS
Length: 50 in (1.3 m)

WEIGHT
AUR: 50 lb (22.7 kg)
System [1 AUR and FCS]: 120 lb (54.4 kg)



» **RANGE**
40+ km



» **ENDURANCE**
40+ minutes



» **SPEED**
Cruise: 70 mph, Dash: 115 mph



» **EFFECTS ON TARGET**
Light armor and anti-personnel effects

| | |
|----------------------------|---|
| FIRE CONTROL SYSTEM | Tablet based FCU with Tap-to-Target guidance and built-in mission planner and trainer |
| TARGETING OPTICS | 2-axis, 4-sensor gimbal (Dual EO and IR) integrated sensor suite |
| OPERATING ALTITUDE | Below 6,500 ft AGL (ceiling >15,000 ft MSL) |
| LAUNCH METHOD | Self contained launcher for ground, air, and maritime |
| LETHALITY | Precision strike with anti-armor warhead |

KEY FEATURES

- » Patented wave-off/recommit capability
- » Intuitive touch tablet controller
- » < 10 minute system setup and launch

ALL-IN-ONE, MAN-PORTABLE, ANTI-ARMOR, SMART MISSILE SYSTEM



Best-in-Class Target Acquisition Sensor Suite



Anti-Armor Warhead



Self-Contained Tube-Launcher



Mission Planning on Tablet Controller

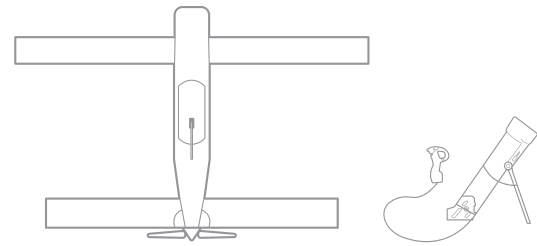


Integrated Training Simulator (T-sim)



Antenna and GCS

SWITCHBLADE® 300 LOITERING MISSILE



DIMENSIONS
Wingspan : 27 in (68.6 cm)
Length: 19.5 in (49.5 cm)

WEIGHT
AUR: 5.5 lb (2.5 kg)



» **RANGE**
10 km



» **ENDURANCE**
15 minutes



» **SPEED**
Cruise: 63 mph, Dash: 100 mph



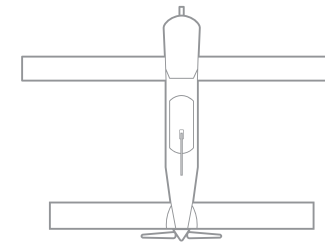
» **EFFECTS ON TARGET**
Anti-personnel effects

| | |
|------------------------------|---|
| GROUND CONTROL SYSTEM | Interoperable with Common Ground Control Station for Puma™ AE, Raven®, and Wasp® AE |
| TARGETING OPTICS | Dual front and side look EO cameras and IR nose camera, Stabilized electronic pan-tilt-zoom |
| OPERATING ALTITUDE | Below 500 ft AGL (ceiling >15,000 ft MSL) |
| LAUNCH METHOD | Self contained ground launch and multipack |
| LETHALITY | Precision strike with Northrup Grumman advanced munition |

KEY FEATURES

- » Patented wave-off/recommit capability
- » Automated waypoint navigation
- » Backpackable
- » < 2 minute setup and launch

BLACKWING™ LOITERING RECONNAISSANCE SYSTEM



DIMENSIONS
Wingspan: 27 in (68.6 cm)
Length: 19.5 in (49.5 cm)
Diameter: 3 in (7.6 cm)

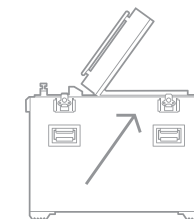
WEIGHT
4 lb (1.8 kg)

KEY FEATURES

- » Rapid launch—rapid response ISR
- » C3 Tactical data relay—UAS to UUV
- » Modular payload

| | |
|----------------------|--|
| SENSORS | Integrated EO/IR sensors—day/night operations |
| LAUNCH METHOD | Underwater-to-air delivery canister, tube, MPL |

MPL MULTIPACK LAUNCHER



DIMENSIONS
36 in D x 30 in W x 36 in H

WEIGHT
~130 lb empty, ~160 lb loaded

| | |
|-----------------------|--|
| CONFIGURATIONS | 6-pack Standard (Alternates for 2-20 AURs possible) |
| MOUNTING | Hold downs for vehicle or ship board use |
| POWER | Solar panel and internal battery, Shore/TacVeh power augments to maintain internal operating temps |
| CONTROL | 100' remote operation control cable (FOB/COP Ops Cell bunker/buildings, Tactical Vehicles, Ship CIC) |

KEY FEATURES

- » Compatible platforms—Switchblade® 300, Blackwing™
- » Rapid Reload—< 30 seconds per round
- » Low observable remote ops
- » Tactical Vehicle/MRAP

