



ERA EXTENDED RANGE ANTENNA

The ERA is a lightweight, portable antenna array kit designed to integrate seamlessly with AeroVironment's standard RF head antenna to support a diverse range of missions. The ERA add-on kit narrows the antenna beam width, extending the command and control range up to 40 kilometers (24.9 miles) or 100 percent greater controllable range over the standard RF antenna with minimal impact to its size, weight and power (SWAP) footprint.

Similar to the standard RF head antenna, the ERA is manually positioned. The included RFU switch allows users to toggle between omnidirectional and extended range antenna modes for long range operations or short range launch and recovery operations. The ERA operates within M1/2/5 or M3/4/6 bands and is compatible with all AeroVironment family of small UAS systems, including Puma™, Raven®, and Wasp®.

Lightweight, Portable Antenna Array Kit

ERA

DISTINCTIONS



LINK RANGE

Up to 40 km



OPERATING BANDS

M1/2/5 or M3/4/6

SPECIFICATIONS

SYSTEM PERFORMANCE

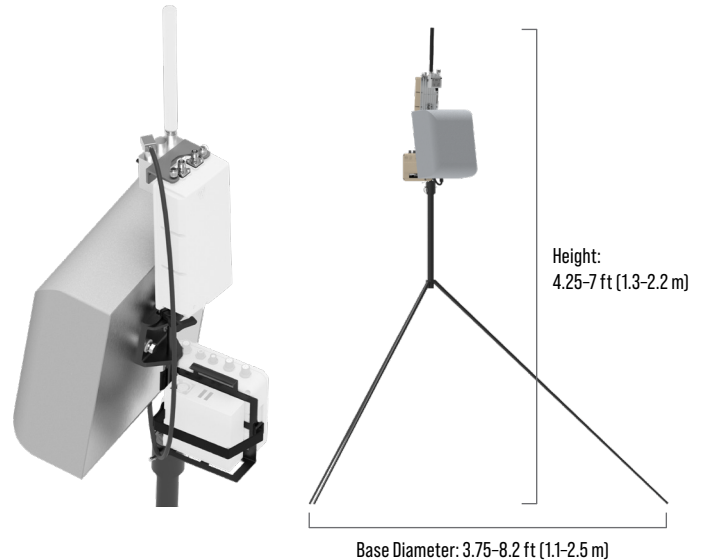
OPERATING BANDS	M1/2/5 or M3/4/6
ANTENNA BEAM WIDTH (3 dB)	30° beam width in azimuth and elevation
LINK RANGE	Up to 40 km
DATA RATE	4.5 Mbps
INTERFACES	Ethernet/RS-232/RS-485

PHYSICAL

SIZE	Array size: 12.25 in x 12.25 in x 5 in (31.1 cm x 31.1 cm x 12.7 cm) Deployed add-on kit height: 4.25-7 ft (1.3-2.2 m) Base Diameter: 3.75-8.2 ft (1.1-2.5 m)
WEIGHT	Deployed add-on kit weight: 10.8 lb (4.9 kg) <i>Note: excludes the GCS RF head, hub and system battery</i>
PACK OUT DIMENSIONS (Pelican IM2950)	31.3 in x 20.4 in x 12.2 in (79.5 cm x 51.8 cm x 31 cm) Case & add-on kit components weight: 35.3 lb (16 kg)

POWER

TX POWER	Pass-through, depends on DDL module
RX SENSITIVITY	-93 dBm
POWER CONSUMPTION	20 W (pass through, not additional)
OPERATING VOLTAGE	5.5-16 V



Kit components included: Array, Tripod, Mast Assembly, RF Switch Assembly, Dry Pack



ERA Kit pack out

KEY FEATURES

- » Lightweight, portable antenna add-on kit
- » Extended range—monitoring, command and control up to 40 km
- » Plug-and-play integration with existing RF head antenna
- » Rugged design capable of withstanding winds up to 25 knots
- » Operational with AeroVironment's DDL™ military operating bands M1/2/5 or M3/4/6