

Architectural Wind™

AVX1000

Building Integrated Wind Turbine



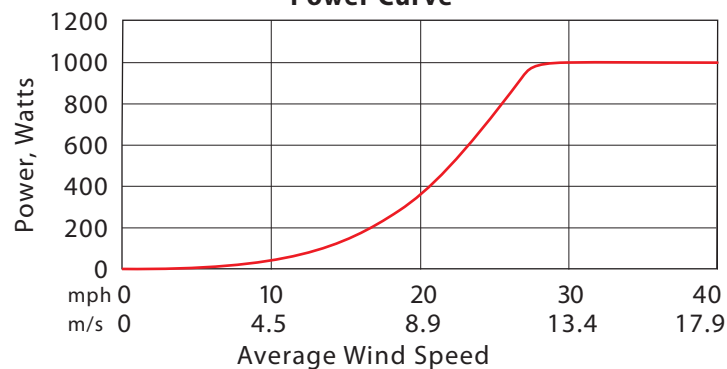
reddot design award
winner 2007



TURBINE SPECIFICATIONS *Preliminary*

- Weight: 130 lbs
- Height and width: 8.5'x 6'
- Number of blades: 5
- Rated power: 1000 W
- Start up wind speed: 2.2m/s (5 mph)
- Output voltage: 250 VDC
- Designed for installation on concrete tilt-up or pre-cast building construction
- Designed to withstand 120 mph winds

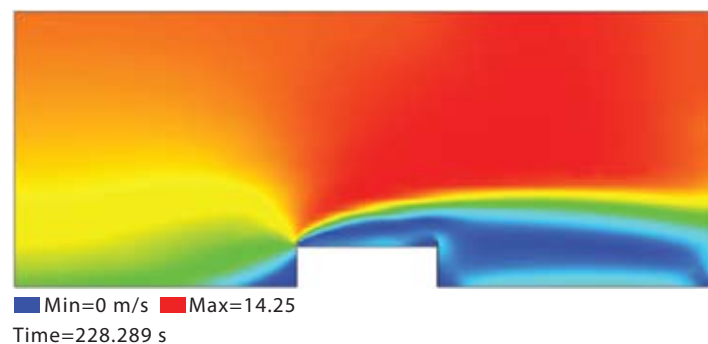
Power Curve



Technology Patents

Architectural Wind has been granted 3 utility patents for its innovative design that is specifically engineered to take advantage of the acceleration effect of wind as it passes over the building parapet.

Wind Velocity Contours



Modular and Scalable Design

- Optional canopy for avian protection
- For commercial use only, not sold separately
- System includes standard UL approved equipment
 - AC disconnect
 - High voltage DC disconnect
 - UL approved inverter

©AeroVironment, Inc. 2008